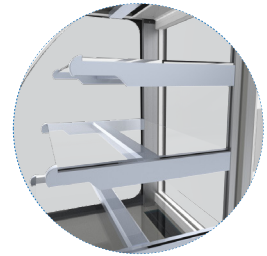
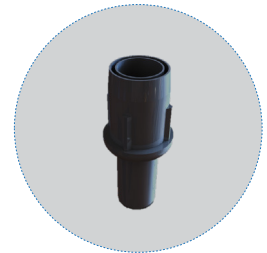


SOUDA-ADC-600
SOUDA-RDC-600

REFRIGERATED/AMBIENT DISPLAY CASE UNIT



Adjustable Shelves



Adjustable
Bullet Feet

STANDARD FEATURES

DESIGN

- Cabinet design is well-engineered to meet functionality, and to fulfill operational aspects and user expectations.
- Efficient refrigeration system to provide user colder products temperature with lower operational cost.

REFRIGERATION SYSTEM

- Corrosion-proof hot gas condensate evaporation.
- More organized and less exposed wires.
- Compact refrigeration system with wheels for easy dragging and maintenance access.
- Large evaporator fan blades to give lower velocity and high-volume airflow.

CABINET CONSTRUCTION

- Two (2) exterior finish choices – Stainless steel and black coated galvanized iron.
- Side, top and front double glass for great product visibility.
- Glass shelves supports product visibility.
- Openable front glass with hinge mechanism for easy cleaning.
- Self-closing glass door at the back.
- Glass with panorama borders for better design integration.
- Cabinet base structure is foamed-in-place using a high density polyurethane insulation.
- Heavy duty and welded structure prior coating for corrosion protection.

SHELVING

- Three (3) adjustable shelves with plenty of space.
- Shelves dimensions:
Bottom: 515mm L x 385mm D (20 9/32" x 15 5/32")
Middle: 515mm L x 385mm D (20 9/32" x 15 5/32")
Top: 515mm L x 333mm D (20 9/32" x 13 1/8")
- Shelf support brackets made of aluminum material; shelves are adjustable free of increments

LIGHTING

- Integrated magnetic LED lights – 4 hidden lights.

MODEL FEATURES

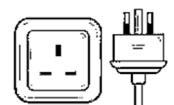
- Two (2) colors / finishes: Stainless steel and black.
- Ambient version is available.
- Effortless usage for staff.
- Adjustable bullet feet with range of 50mm.
- Adjustable shelves free of increments.
- Interior and refrigeration system are isolated with insulated base.
- Stable temperature levels to realize products' needs.

SPECIAL FEATURES

- LED lights are used which is long lasting and energy-efficient.
- Optimized honeycomb is used to get better air circulation through the cabinet.
- The EC fan motor is used energy efficient air movement which is the latest in technology
- A double-glazed glass system to reduce heat transfer from outer atmosphere to products inside the cabinet.

ELECTRICAL



- Unit is completely pre-wired at factory and ready to connect to a 240/50-60/1 phase, 13 amp dedicated outlet.



WARRANTY

Two years warranty on all parts

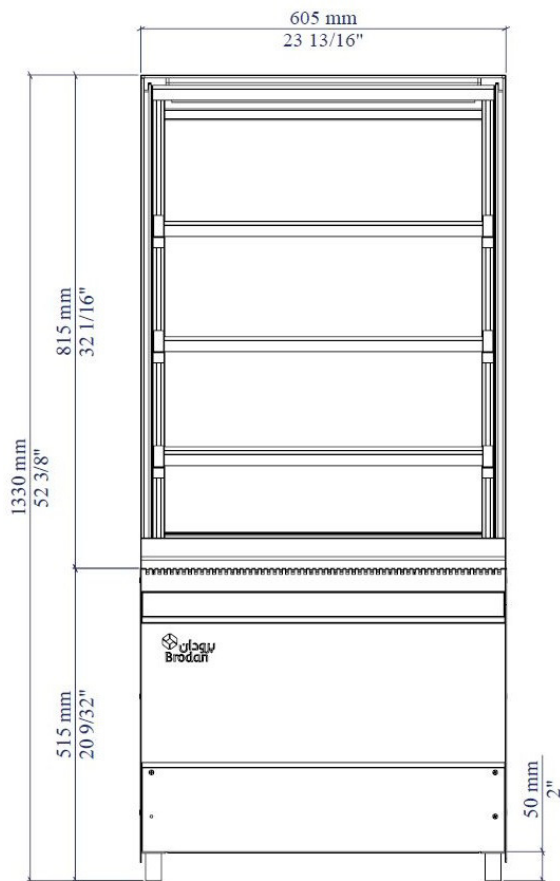
DATA

Body Color			Inner Body	External Length mm (inches)			Internal Length mm (inches)			Volume (m ³)
				L	D	H*	L	D	H*	
Black	I	Stainless Steel	Galvanized Iron / Stainless Steel	605 (23 5/8")	755 (29 5/8")	1330 (52 3/8")	568 (22 3/8")	673 (26 1/2")	795 (31 5/16")	0.25
										

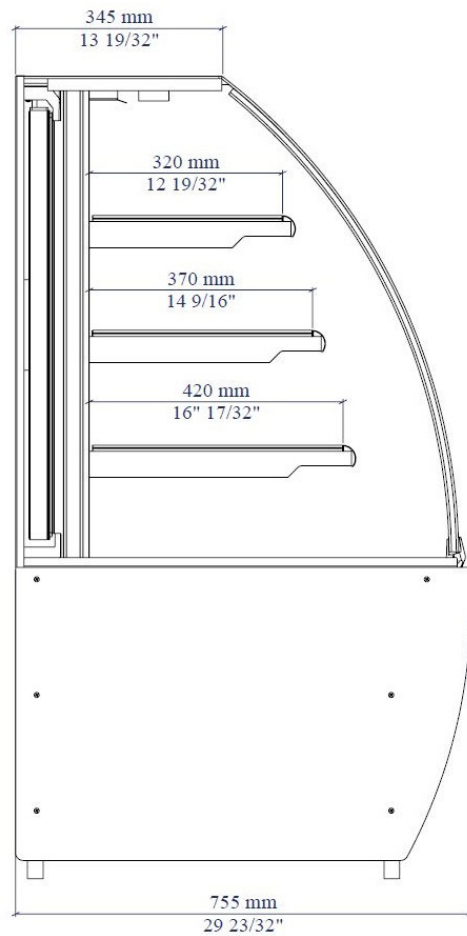
Data for refrigerated unit (SOUDA-RDC-600)

Temperature Range (°C)	Horse Power (HP)	Voltage/Hertz/Phase	Amps	Refrigerant Type	Refrigerant Charge (g)	Cord Length (m)	Weight (kg)
+2 to +6	¼	240/50-60/1	2.5	R404A	230	3	-157

PLAN VIEW



Front Elevation



Side Elevation