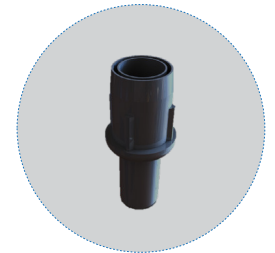




Adjustable Shelves



Adjustable Bullet Feet

STANDARD FEATURES

DESIGN

- Cabinet design is well-engineered to meet functionality, and to fulfill operational aspects and user expectations.
- Efficient refrigeration system to provide user colder products temperature with lower operational cost.

REFRIGERATION SYSTEM

- Corrosion-proof hot gas condensate evaporation.
- More organized and less exposed wires.
- Bolted back cover for easy maintenance access.
- Large evaporator fan blades to give lower velocity and high-volume airflow.

CABINET CONSTRUCTION

- Two (2) exterior finish choices – Stainless steel and black coated galvanized iron.
- Side and top double glass for great product visibility.
- Glass with panorama borders for better design integration.
- Entire cabinet structure is foamed-in-place using a high density polyurethane insulation.
- Heavy duty and welded structure prior coating for corrosion protection.

SHELVING

- Three (3) adjustable shelves with plenty of space.
- Shelves dimensions:
Bottom: 815mm L x 387mm D (32 1/16" x 15 1/4")
Middle: 815mm L x 337mm D (32 1/16" x 13 9/32")
Top: 815mm L x 287mm D (32 1/16" x 11 5/16")
- Shelf support brackets made of same material as cabinet interior; shelves are adjustable on 30mm (13/16") increments.
- Shelf front stopper trim.

LIGHTING

- Integrated magnetic LED lights – 4 hidden lights.

MODEL FEATURES

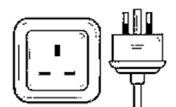
- Two (2) colors / finishes: Stainless steel and black.
- Effortless usage for both customers and staff.
- Adjustable bullet feet with range of 50mm.
- Adjustable shelves on 30mm (1 3/16") increments.
- Interior and refrigeration system are isolated with insulated base.
- Stable temperature levels to realize products' needs.

SPECIAL FEATURES

- LED lights are used which is long lasting and energy-efficient.
- Optimized honeycomb is used to get better air circulation through the cabinet.
- The EC fan motor is used energy efficient air movement which is the latest in technology
- A double-glazed glass system to reduce heat transfer from outer atmosphere to products inside the cabinet.

ELECTRICAL



- Unit is completely pre-wired at factory and ready to connect to a 240/50-60/1 phase, 13 amp dedicated outlet.



WARRANTY

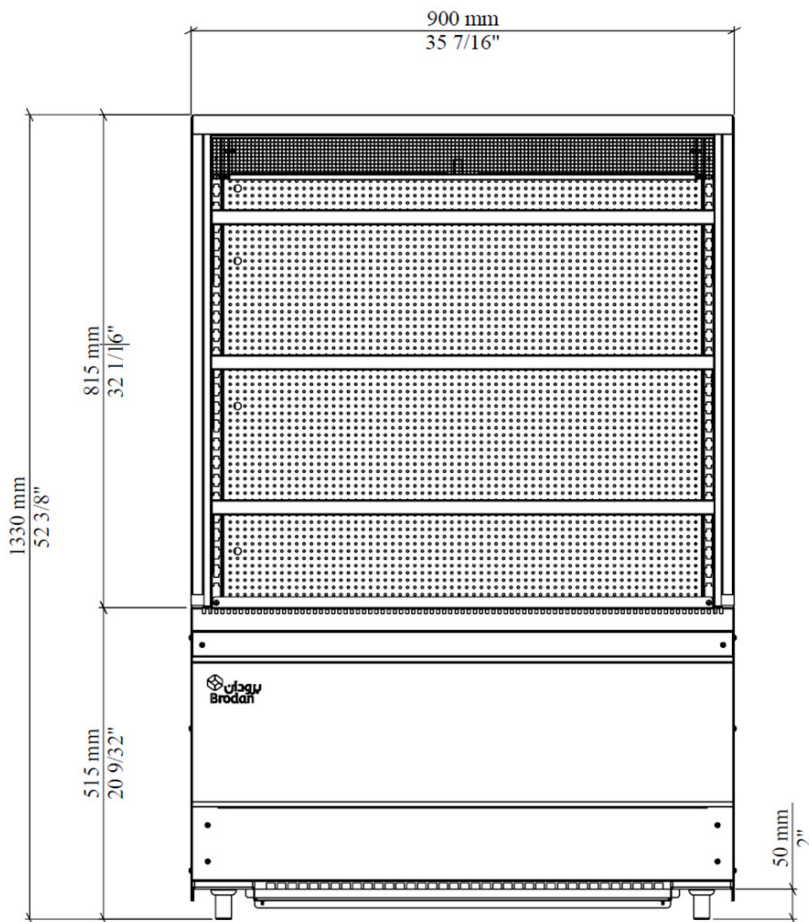
Two years warranty on all parts

DATA

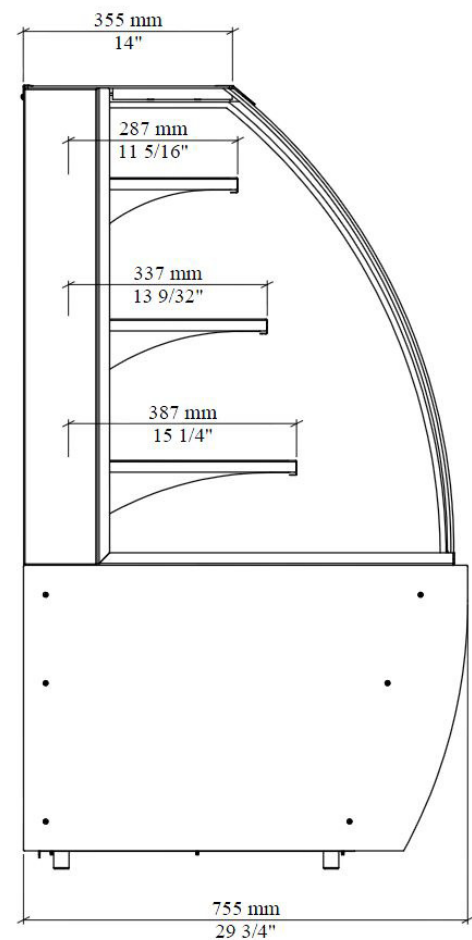
Body Color			Inner Body	External Cabinet Dimensions (mm)			Internal Cabinet Dimensions (mm)			Refrigerated Volume (m ³)
				L	D	H*	L	D	H*	
Black	I	Stainless Steel	Galvanized Iron / Stainless Steel	900	755	1330	840	680	800	0.38
										

Temperature Range (°C)	Horse Power (HP)	Voltage/Hertz/Phase	Amps	Refrigerant Type	Refrigerant Charge (g)	Cord Length (m)	Weight (kg)
+2 to +6	1	240/50-60/1	5	R404A	500	3	-164

PLAN VIEW



Front Elevation



Side Elevation